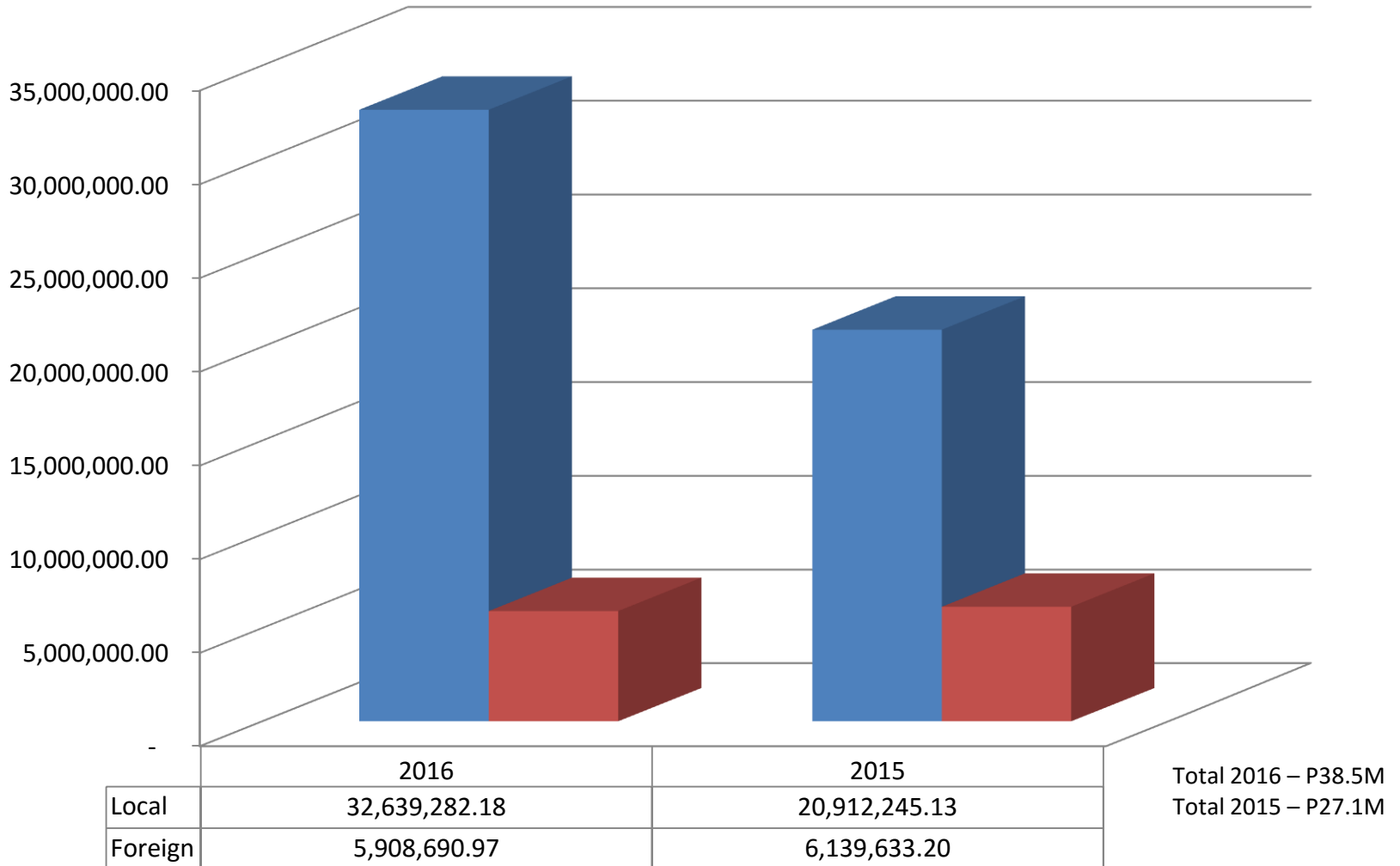


UNITED CHURCH OF CHRIST IN THE PHILIPINES

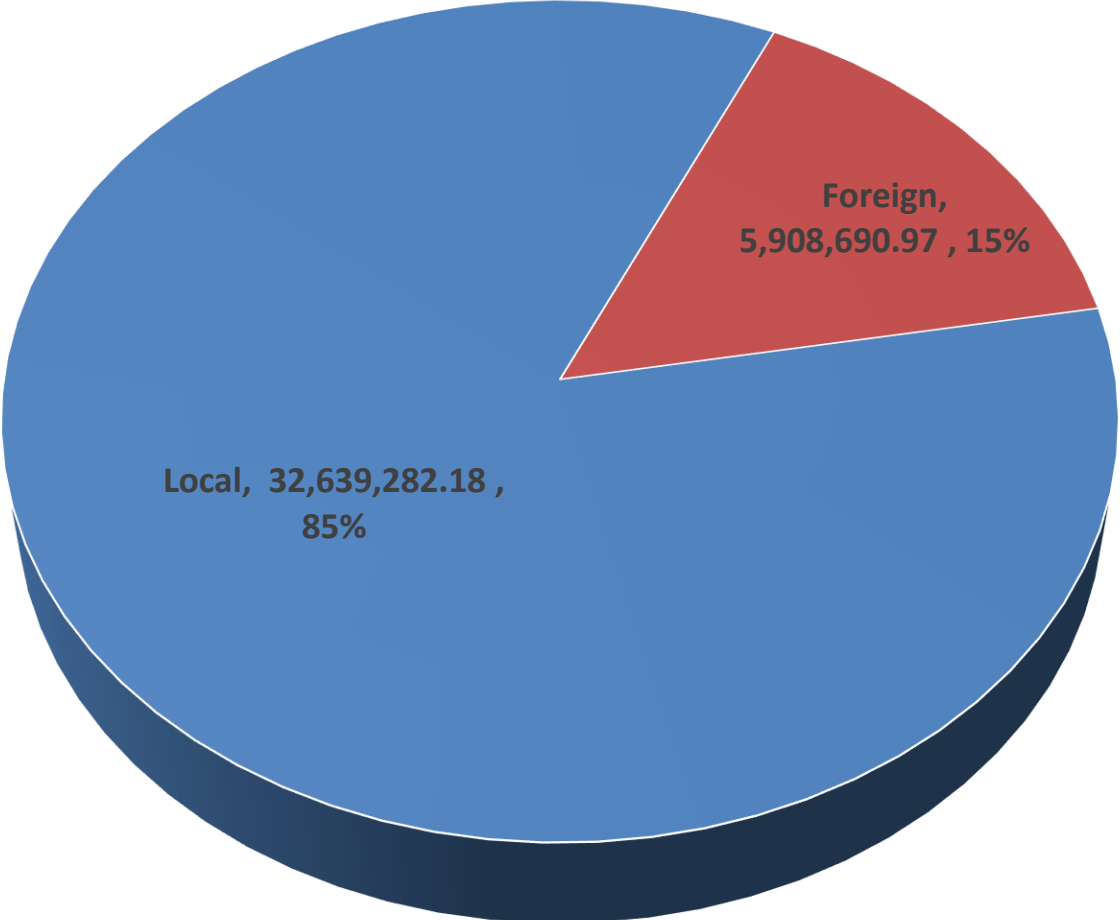
FINANCIAL HIGHLIGHTS

As of May 31, 2016

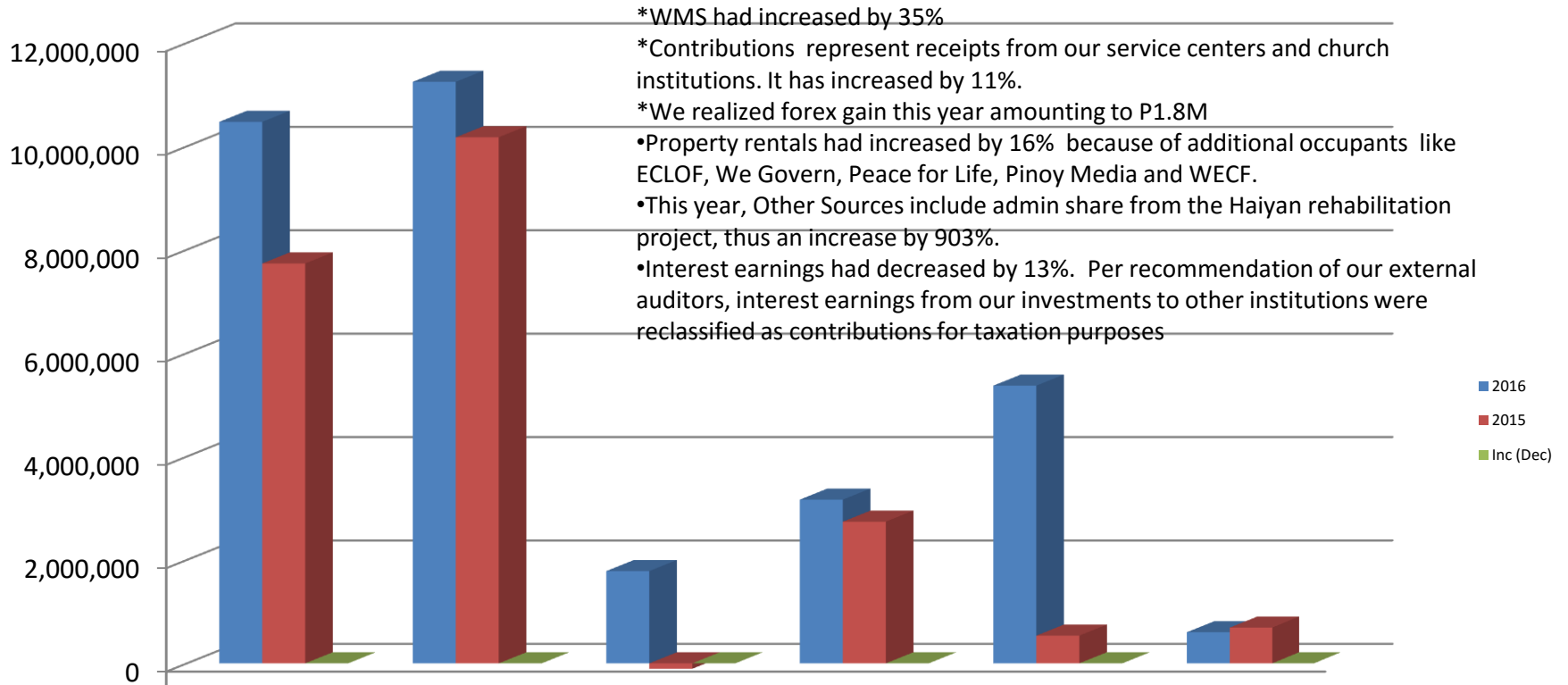
Sources - Gen & Program Funds (comparative figures 2016 & 2015)



**RECEIPTS – General and Program Funds
June 01, 2015 to May 31, 2016**

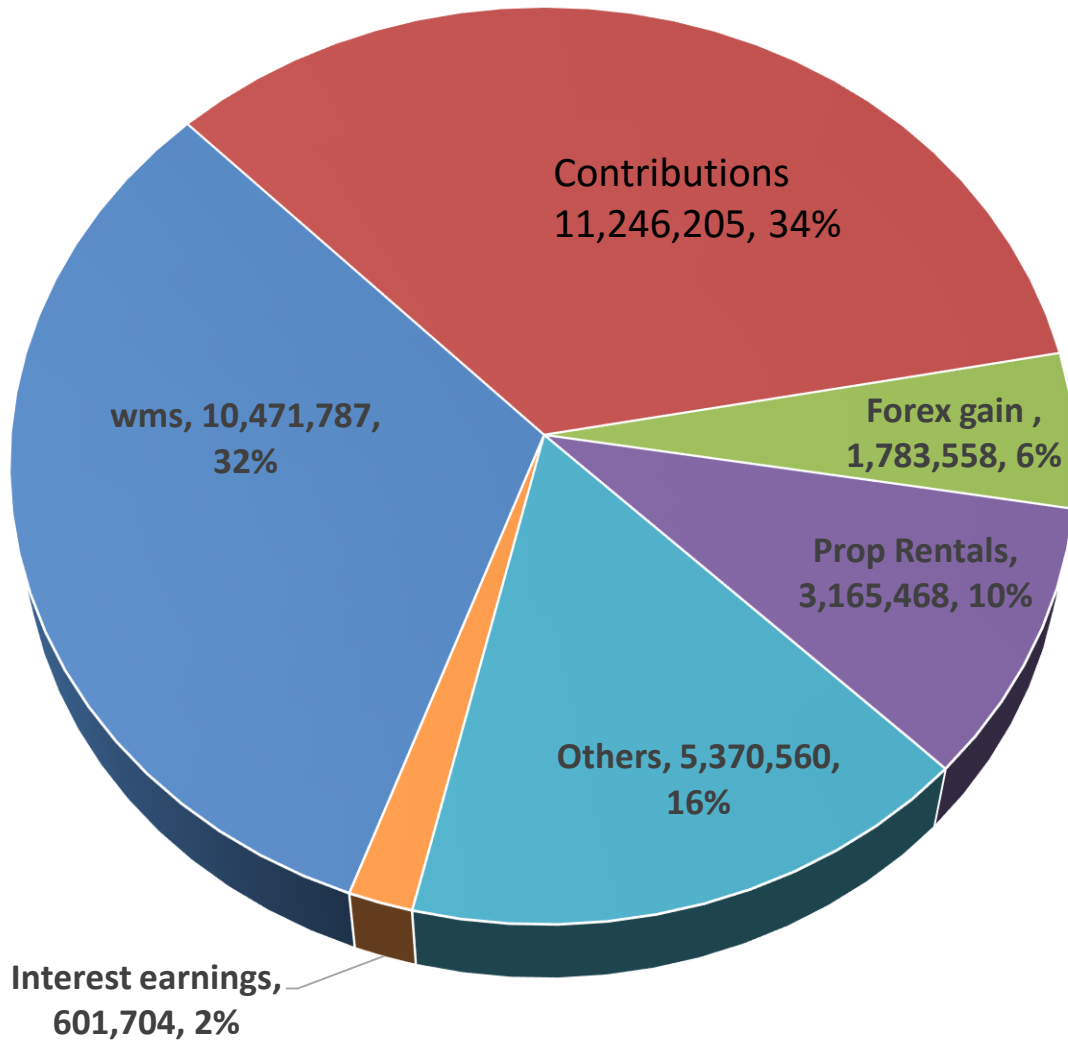


Local Sources-Gen & Program Funds (comparative figures 2016 & 2015)

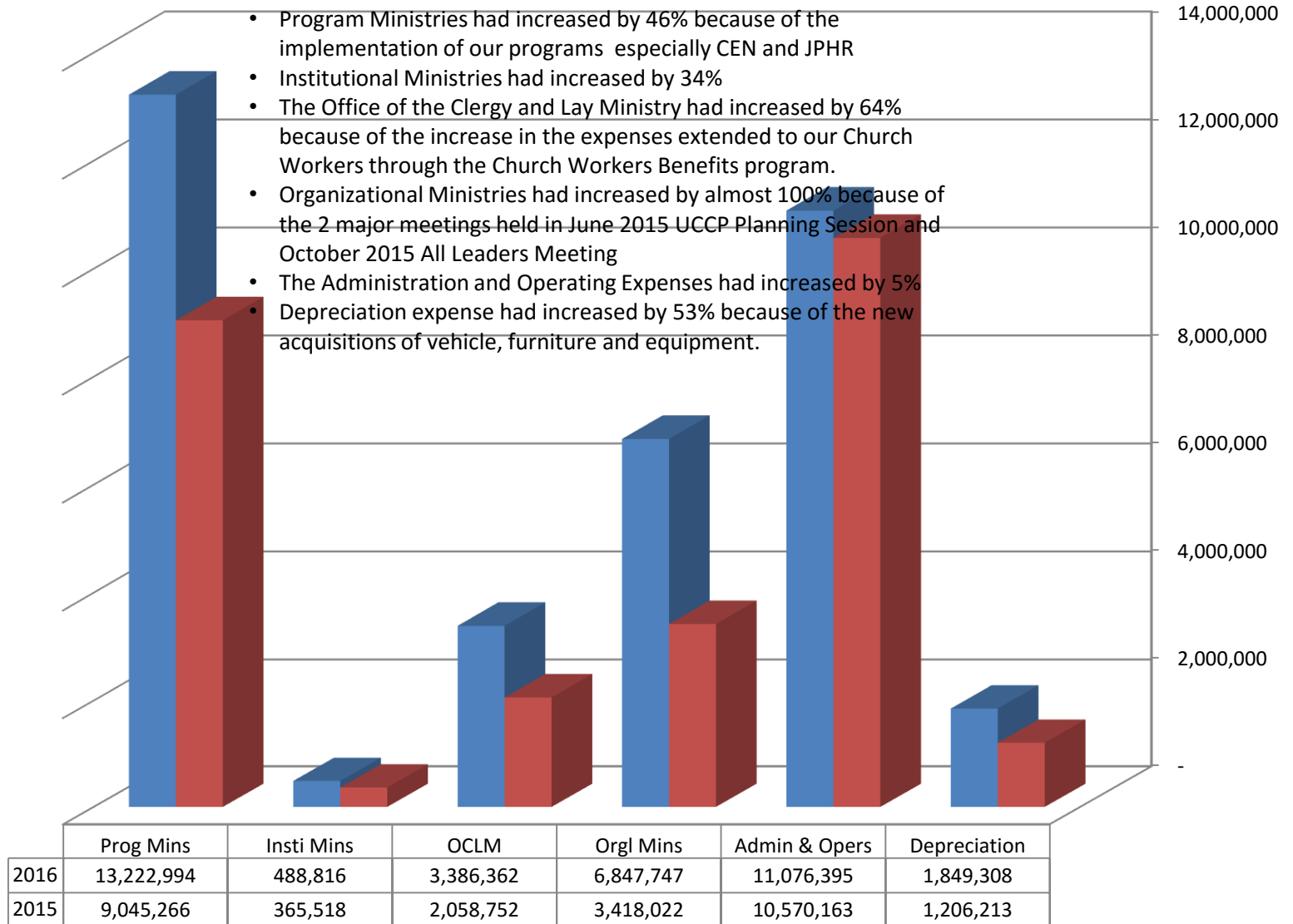


	wms	contributions	Forex gain	Prop Rentals	Others	Interest earnings
2016	10,471,787	11,246,205	1,783,558	3,165,468	5,370,560	601,704
2015	7,733,759	10,174,178	-105,110	2,739,349	535,440	690,602
Inc (Dec)	35%	11%	1797%	16%	903%	-13%

RECEIPTS - LOCAL SOURCES
June 01, 2015 to May 31, 2016



Expenses - Gen & Program Funds (comparative figures 2016 & 2015)



EXPENSES – General and Program Funds
June 01, 2015 to May 31, 2016

